

# Join the Casa Kids Club!



## CHILDREN'S MEALS

Child's plates for ages 12 and under.  
\$3.99, drink included.

### Child's Plate

Your choice of one cheese enchilada, one beef taco or two chicken taquitos, served with rice and beans.

### Chicken wheels

Golden fried chicken wheels served with French fries.

### Mini Quesadilla

A cheese quesadilla served with French fries.

### Mini Pizza

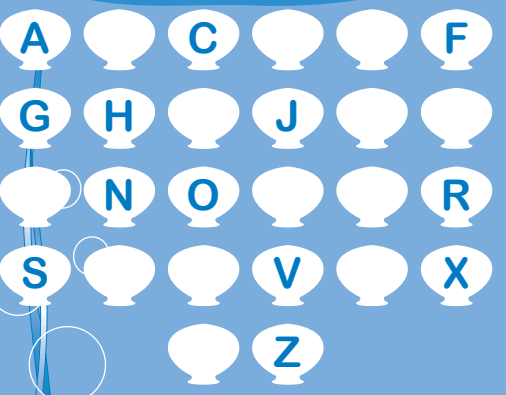
A personal size pepperoni pizza served with chocolate pudding.

### Mac & Cheese

A dish of creamy Kraft Macaroni & Cheese served with chocolate pudding.



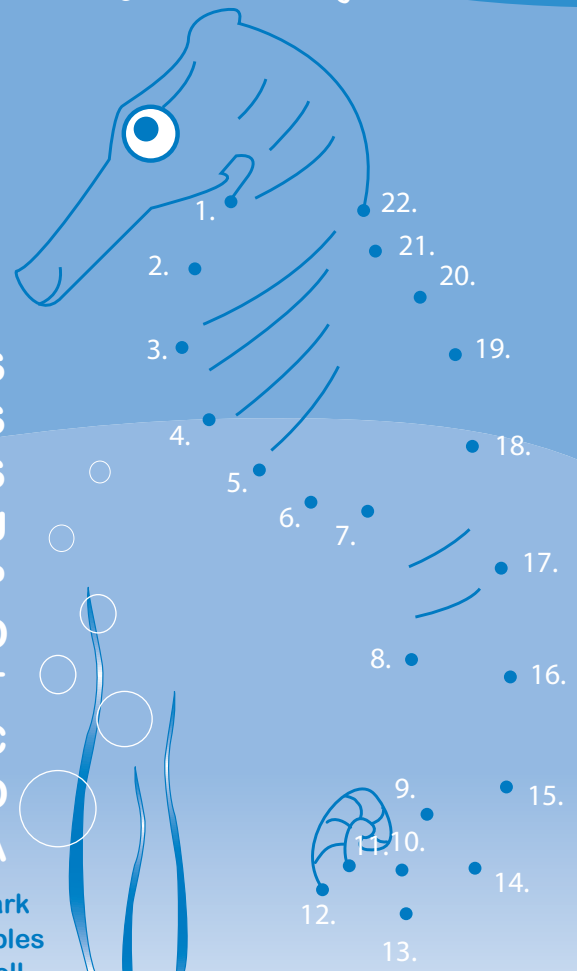
Fill in the alphabets



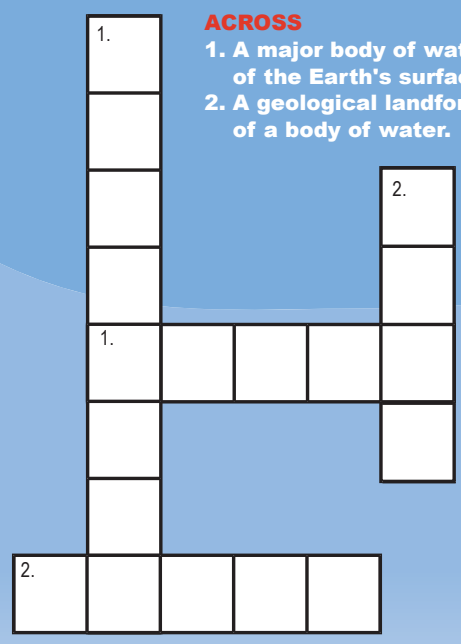
M C T D P M I R H S  
 S A N S E R L S S S  
 L E E U E E I E H S  
 L B R B G F A A W U  
 E U R M T H R I C P  
 H B U A O K M R O O  
 S B C R L M A S C T  
 M L S I I B C S E C  
 R E D N U O L F A O  
 S S G E N O M E N A

- seahorse
- flounder
- anemone
- shark
- crab
- ocean
- shrimp
- bubbles
- catfish
- submarine
- octopus
- shell
- current
- swimming

Connect the dots



Crossword Puzzle



#### DOWN

- 1. A unique fish that looks like a horse.
- 2. The part of the Earth that is not covered by water.

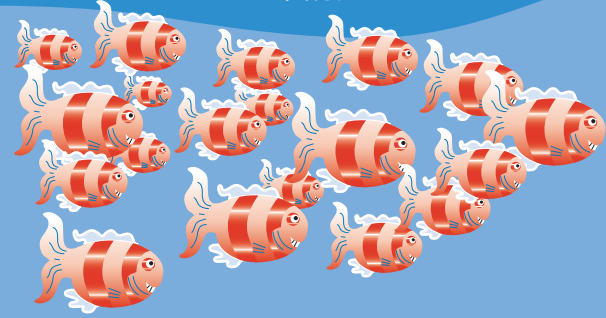
#### ACROSS

- 1. A major body of water, approximately 71% of the Earth's surface.
- 2. A geological landform along the shoreline of a body of water.

Unscramble the words

- shfi
- arbc
- ihnpldo
- wleah
- imsw
- eacon

How many school of fish are below?



Color in the submarine



ANSWERS: Unscramble the words = 1. fish, 2. crab, 3. dolphin, 4. whale, 5. swim, 6. ocean / School of fish = 19qty. Crossword puzzle: Down - 1. Seahorse, 2. Land, Across - 1. Ocean, 2. Beach